

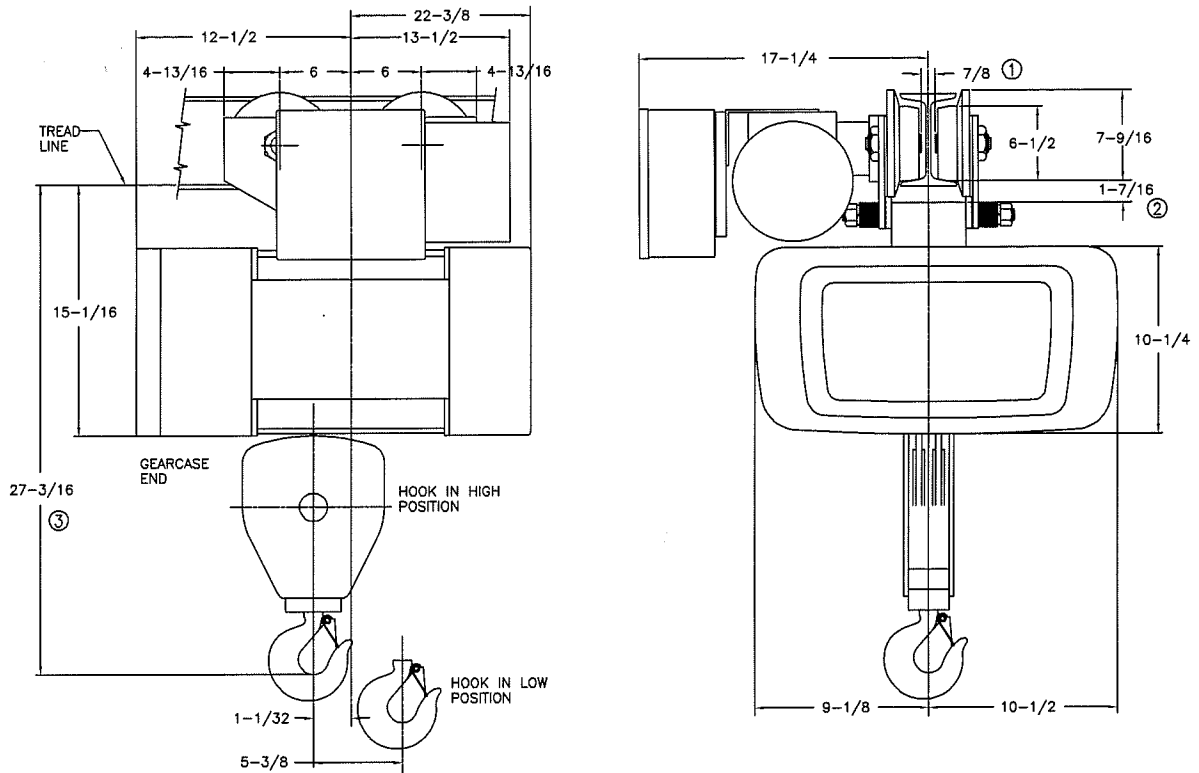
# Single Reeved

# 3 Ton

# ELECTRIC WIRE ROPE

# Y80 - 800 Series

## MOTOR DRIVEN TROLLEY



MINIMUM STANDARD RADIUS: 7'-0", FOR SMALLER RADIUS CONTACT FACTORY

CATALOG NUMBER	HOIST				TROLLEY		WEIGHT (LBS)	ESTIMATED WHEEL LOAD*	
	MAX LIFT (FT)	HOIST SPEED (FPM)	HP	ROPE NO & DIA	SPEED (FPM)	HP		HIGH HOOK (LBS)	LOW HOOK (LBS)
†80M03-030S09-1	30	9	2	4-5/16	50	1/2	535	2169	3121
†80M03-030S09-2	30	9/3	2/66	4-5/16	50	1/2	550	2173	3125
†80M03-030S18-1	30	18	4	4-5/16	50	1/2	525	2166	3118
†80M03-030S18-2	30	18/9	4/2	4-5/16	50	1/2	540	2170	3122

Weights shown are for standard hoists listed. For approximate shipping weights, add 110 lbs. to the net weight given. Consult factory for weights of special hoists. Dimensions shown are in inches unless otherwise noted.

When used on smallest I-beam size, beam must be free of all obstructions, such as clips, suspension bolts, and nuts. Trolleys for wide flange beams refer to Optional Equipment.

Trolley beam size range – beam flange width 4" min., 6-1/4" max; beam depth 8" min. standard, 6-3/8"-8-5/8" with 1st extension, 8-3/4"-11" with 2nd extension. See Optional Price section for extension pricing.

① Occurs on smallest beam size only. On larger beams, it is increased by the difference in flange width.

② Clearance shown is between lug and wheel tread.

③ Dimension increases 3" when hoist is equipped with screw type limit switch.

\* Estimated wheel load per one (1) wheel. Includes live and dead load impacts.

† For a Y80 add a "Y" prefix.

# Standard Features

## Dimensions & Specifications

## ELECTRIC WIRE ROPE

## Y80 - 800 Series

### Single Reeved Electric Hoists with Motor Driven Trolleys

Feature	1/2 Ton	1 Ton	2 Ton	3 Ton	5 Ton
Service Class	H-4	H-4	H-4	H-4	H-4
Reeved	2 PS - 1/4"	2 PS - 1/4"	2 PS - 5/16"	4 PS - 5/16"	6 PS - 5/16"
Hoist Gearing	Triple reduction Helical/Spur	Triple reduction Helical/Spur	Triple reduction Helical/Spur	Triple reduction Helical/Spur	Triple reduction Helical/Spur
Hook Assembly	Bearing-mounted 360 degree rotate	Bearing-mounted 360 degree rotate	Bearing-mounted 360 degree rotate	Bearing-mounted 360 degree rotate	Bearing-mounted 360 degree rotate
Hoist Motor	30-minute rated TENV	30-minute rated TENV	30-minute rated TENV	30-minute rated TENV	30-minute rated TENV
Hoist Motor Brake	100% Torque disc	100% Torque disc	100% Torque disc	100% Torque disc	100% Torque disc
Load Brake	Weston type Roller Ratchet	Weston type Roller Ratchet	Weston type Roller Ratchet	Weston type Roller Ratchet	Weston type Roller Ratchet
Hoist Control	1-speed	1-speed	1-speed	1-speed	1-speed
Control Circuit voltage	115 Volts	115 Volts	115 Volts	115 Volts	115 Volts
Hoist Limit Switch	Upper block control circuit	Upper block control circuit	Upper block control circuit	Upper block control circuit	Upper block control circuit
Rope Drum Diameter	7-1/2"	7-1/2"	7-1/2"	7-1/2"	7-1/2"
Rope Drum Material	Cast Iron	Cast Iron	Cast Iron	Cast Iron	Cast Iron
Sheave Diameter	5"	5"	6"	6"	6"
Sheave Material	Steel	Steel	Steel	Steel	Steel
Trolley Gearing	Worm	Worm	Worm	Worm	Worm
Trolley Motor	30-minute rated TENV	30-minute rated TENV	30-minute rated TENV	30-minute rated TENV	30-minute rated TENV
Trolley Brake	Optional AC Disc	Optional AC Disc	Optional AC Disc	Optional AC Disc	Optional AC Disc
Trolley Control	1-speed	1-speed	1-speed	1-speed	1-speed
Wheels	4"	4"	4"	4" for 45' lift 6-1/2" for 30' lift	6-1/2"
Bumpers	Optional Rubber	Optional Rubber	Optional Rubber	Optional Rubber	Optional Rubber
Bearings	Anti-friction	Anti-friction	Anti-friction	Anti-friction	Anti-friction
Motor TAS	Standard	Standard	Standard	Standard	Standard
Control Enclosure	NEMA 1	NEMA 1	NEMA 1	NEMA 1	NEMA 1