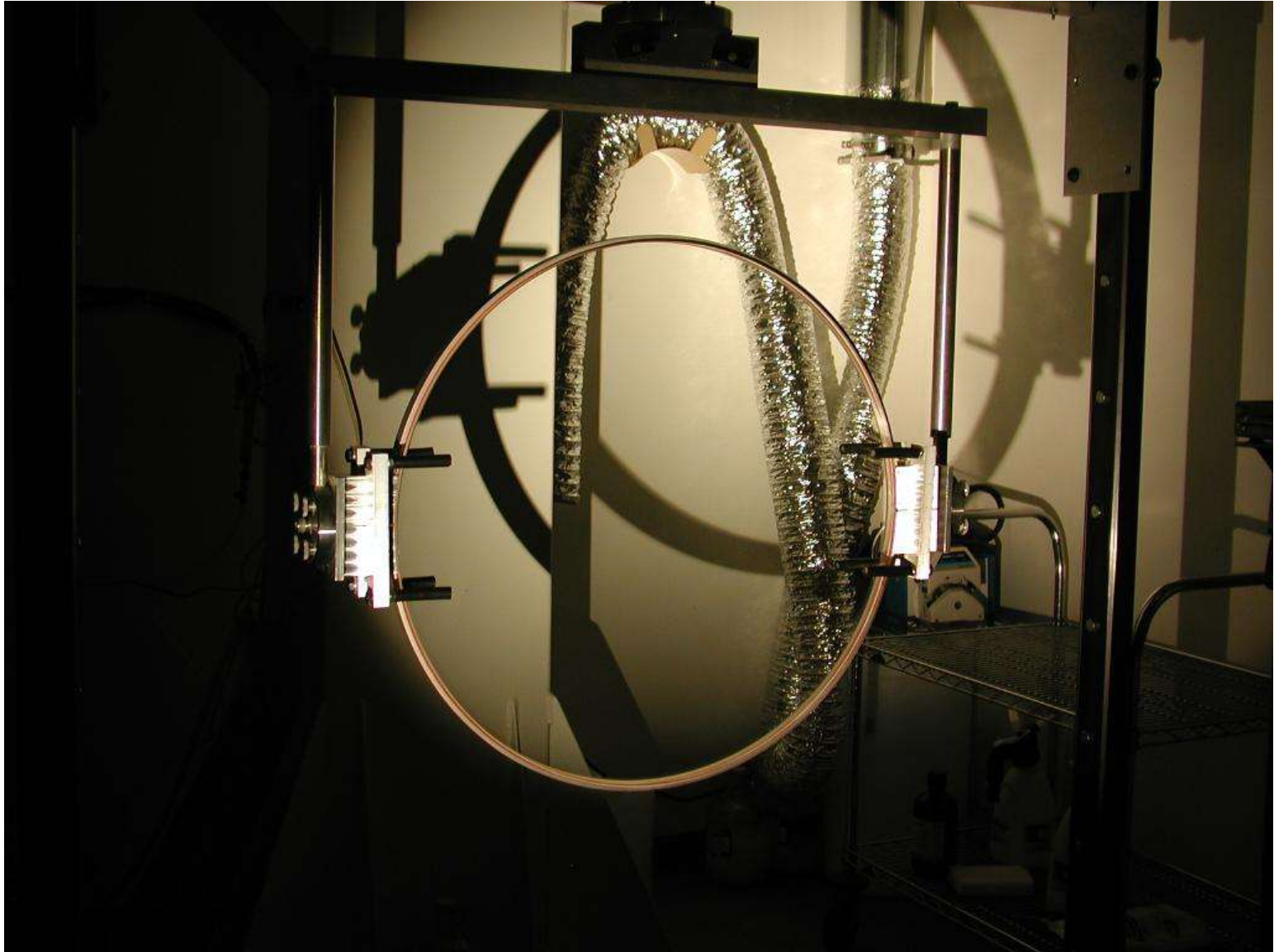


# Magellan SAC Meeting

Technical Manager's Report Slides

April 21-22, 2004, Tucson, AZ



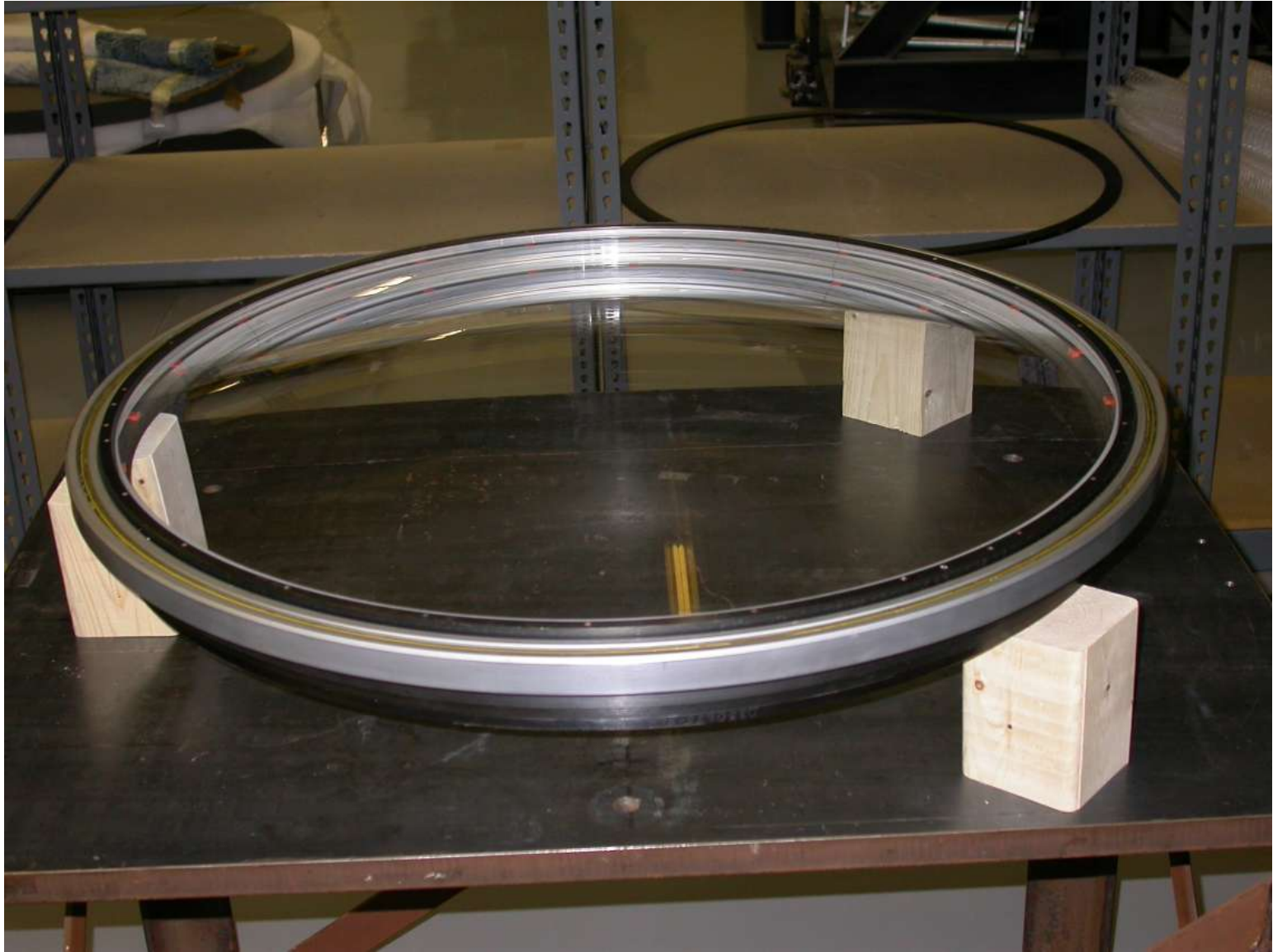
# IMACS mask storage

Before

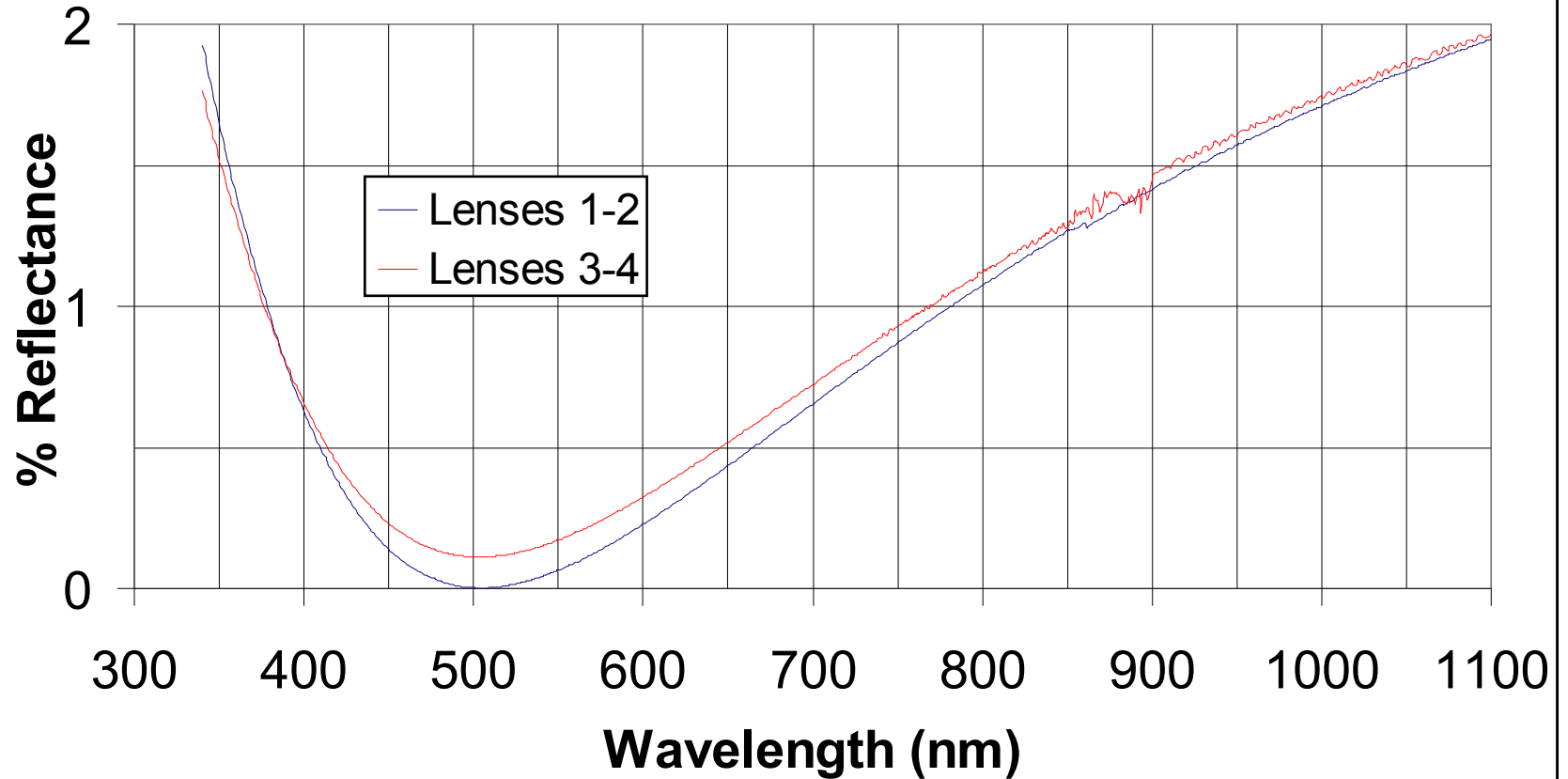


After





# Sol Gel Witness Sample Performance

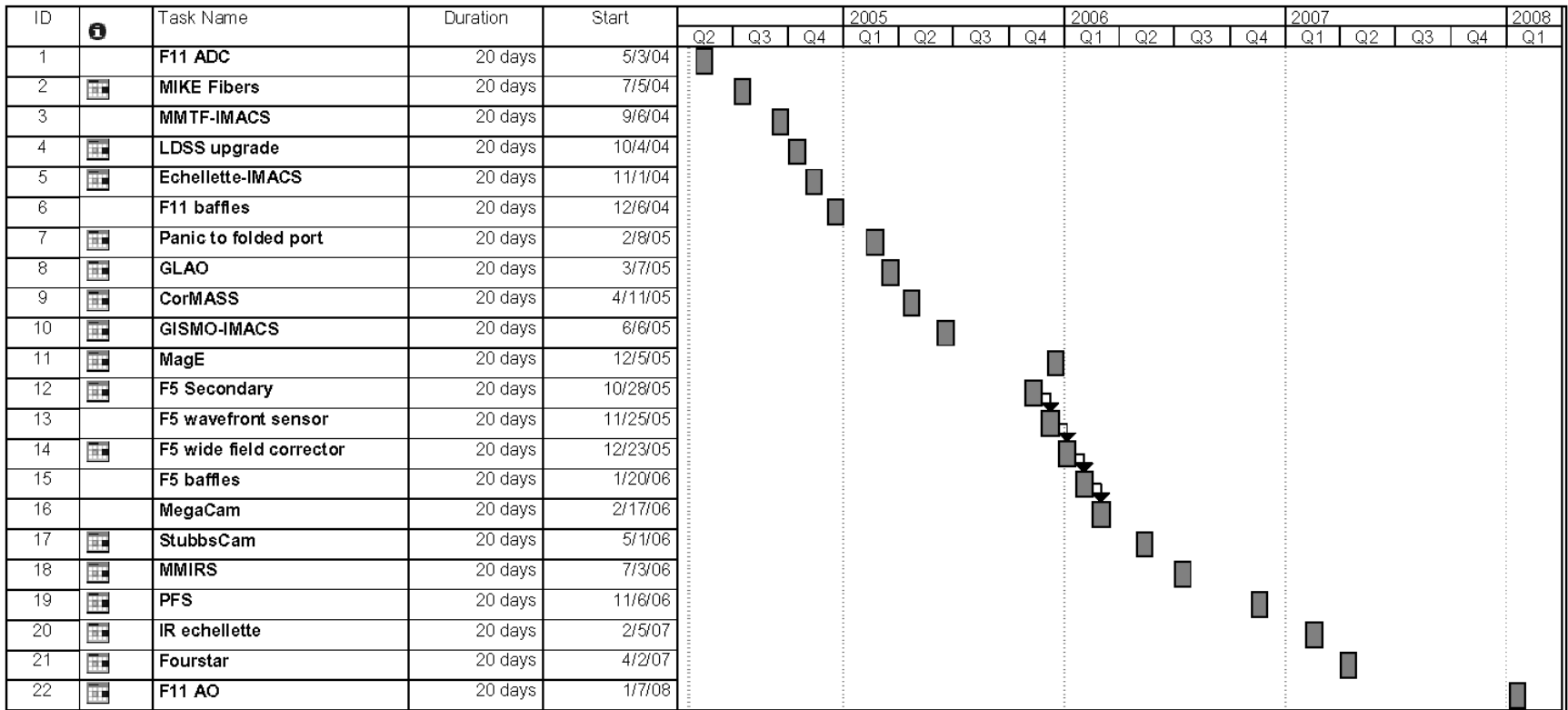


# Facility Instrument Proposals

- MagE (<http://www.ociw.edu/magwiki/MagESACProposal>)
- IR Echellette  
(<http://www.ociw.edu/magwiki/IREchelletteSACProposal>)

# Facility Instrument Upgrades

- MMTF
- IMACS Echellette
- LDSS



Project: Magellan instrument arrivals Date: 4/19/04	Task		Milestone		External Tasks	
	Split		Summary		External Milestone	
	Progress		Project Summary		Deadline	

<b>Date</b>	<b>Job</b>	<b>Comments</b>
2004	Telescope engineer/scientist	Backup Frank Perez. Need management support and telescope/instrument expertise when Frank is off or traveling. Higher staffing level will need more management. Immediate need. Advertising now.
"	Electronics engineer/Instrument specialist	Construction and controls troubleshooting to make progress on chronic problems. Immediate need. Changed description to include Instrument specialist tasks.
"	Computer admin (1/2 fte)	Networking, web pages, etc. Current 0.1 fte insufficient. Immediate need. Moved up from 2005.
2005	Instrument scientist	Backup David Osip when he's off the mountain. Instrument count becomes too large for one instrument scientist. Immediate need.
"	Telescope operator	Winter work durations can exceed reasonable levels. To provide support through the night double shifts might be needed. It has also been suggested that some day shift work by telescope operators would be welcome.
2006	Engineer/technician	Troubleshooting new instruments and controls, computer hw support.
"	Instrument specialist/scientist	F/5 preparation, more new instruments. Two instrument specialists are expected to be overwhelmed by the number of instruments at this time. May be delayed depending on instrument schedules.
2007-2008	Instrument scientist	New instruments keep arriving; prep for F/5 installation.
"	Engineer/technician	F/5 controls, instrument support.

## Additional staff at SBS

<b>Date</b>	<b>Job</b>	<b>Comments</b>
2004	Electronics engineer	Done for FY04/05
2005	Mechanical designer/engineer	0.5 FTE to start; New instrumentation needs observatory-level support; continuing work on chronic problems.