

Magellan Associate Director Report

- Personnel
- Observing Statistics
- Commissioning of Instruments



Personnel



- ***Telescope Engineer Scientist:***
 - In mid-December, Povilas Palunas accepted the position of Magellan Telescope Scientist
 - Povilas and his family arrived in La Serena to take up residence on February 27
 - Before joining Magellan, Povilas was a Research Scientist at the McDonald Observatory
 - He has considerable experience working with large telescopes, and was the top choice of the search committee

Personnel (cont.)

- ***Magellan Mechanical Engineer in Pasadena:***
 - Charlie Hull will be transitioning to work full time for the GMT project by July 1
 - Fortunately, Charlie is interested in maintaining contact with the Magellan project, and we hope to continue to draw on his experience from time to time
 - A search for Charlie's replacement will be organized soon

Personnel (cont.)

- ***Magellan Telescope Controls Programmer:***

- José Miguel Soto has recently informed us that he will be taking a job with Gemini South beginning in mid-April
- José is our most experienced DOS programmer, and will be difficult to replace on a short timescale
- One of the principal reasons that he gave for leaving Magellan was the more attractive benefits package offered by Gemini
- With the Magellan budget frozen for the next 2 years, it would not be surprising if other key Magellan Operations staff are tempted to leave



Observing Statistics

Baade Telescope Instrumentation Usage:

| | 9 Feb 2007- 21 Aug 2007 | 22 Aug 2007- 2 Mar 2008 |
|-------|----------------------------|----------------------------|
| IMACS | 74% | 65% |
| PANIC | 26% | 32% |
| MagIC | -- | 3% |

Clay Telescope Instrumentation Usage:

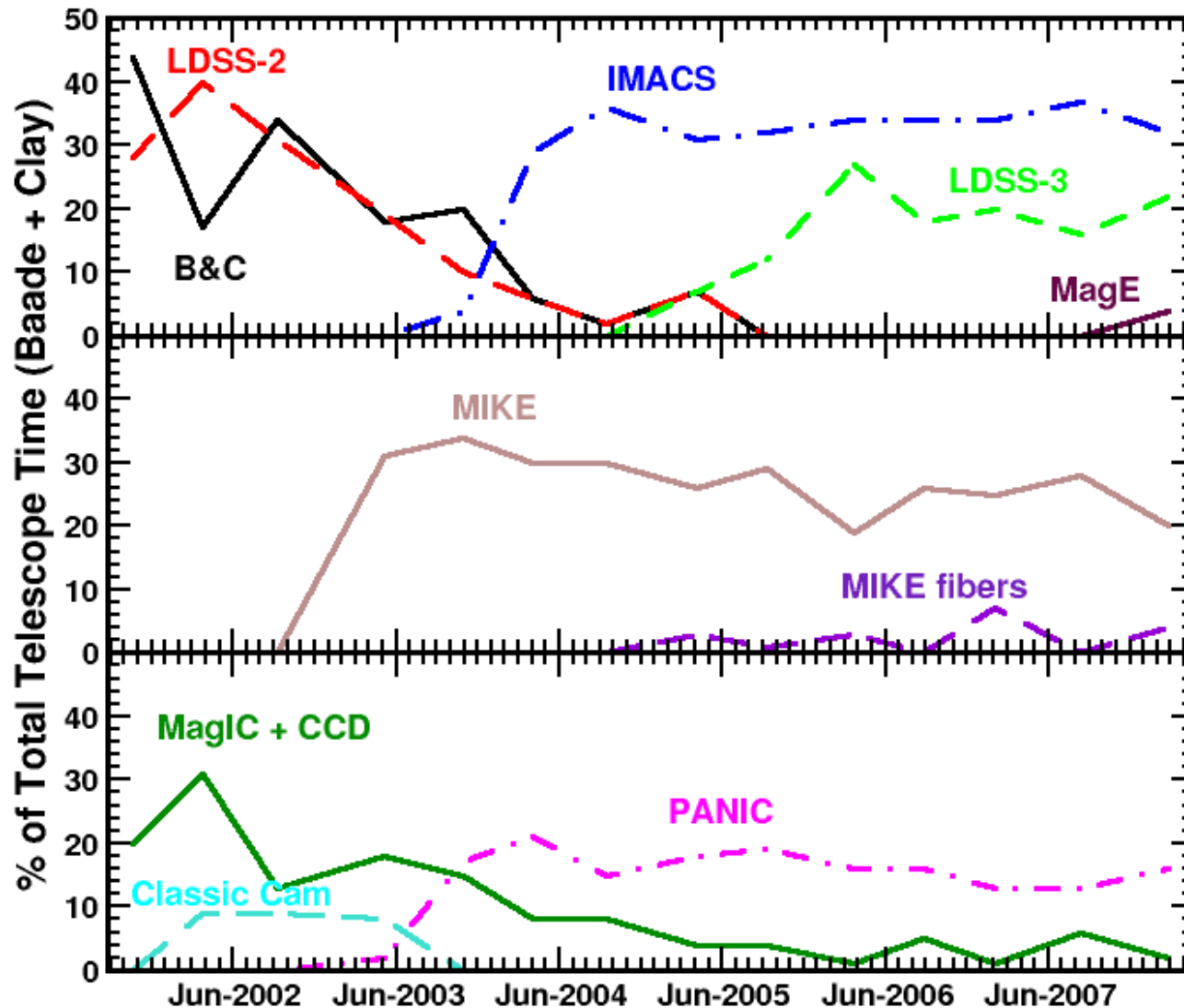
| | 9 Feb 2007- 21 Aug 2007 | 22 Aug 2007- 2 Mar 2008 |
|-------------|----------------------------|----------------------------|
| MIKE | 56% | 41% |
| MIKE fibers | -- | 7% |
| LDSS-3 | 32% | 45% |
| MagE | -- | 7% |
| MagIC | 12% | -- |

Observing Statistics

Baade + Clay Telescopes Instrumentation Usage:

| | 9 Feb 2007- 21 Aug 2007 | 22 Aug 2007 2 Mar 2008 |
|-------------|----------------------------|---------------------------|
| IMACS | 34% | 32% |
| MIKE | 25% | 20% |
| LDSS-3 | 20% | 22% |
| PANIC | 13% | 16% |
| MagE | -- | 4% |
| MIKE fibers | 7% | 4% |
| MagIC | 1% | 2% |

Observing Statistics: Instrument Usage



Observing Statistics

22 Aug 2007-2 Mar 2008:

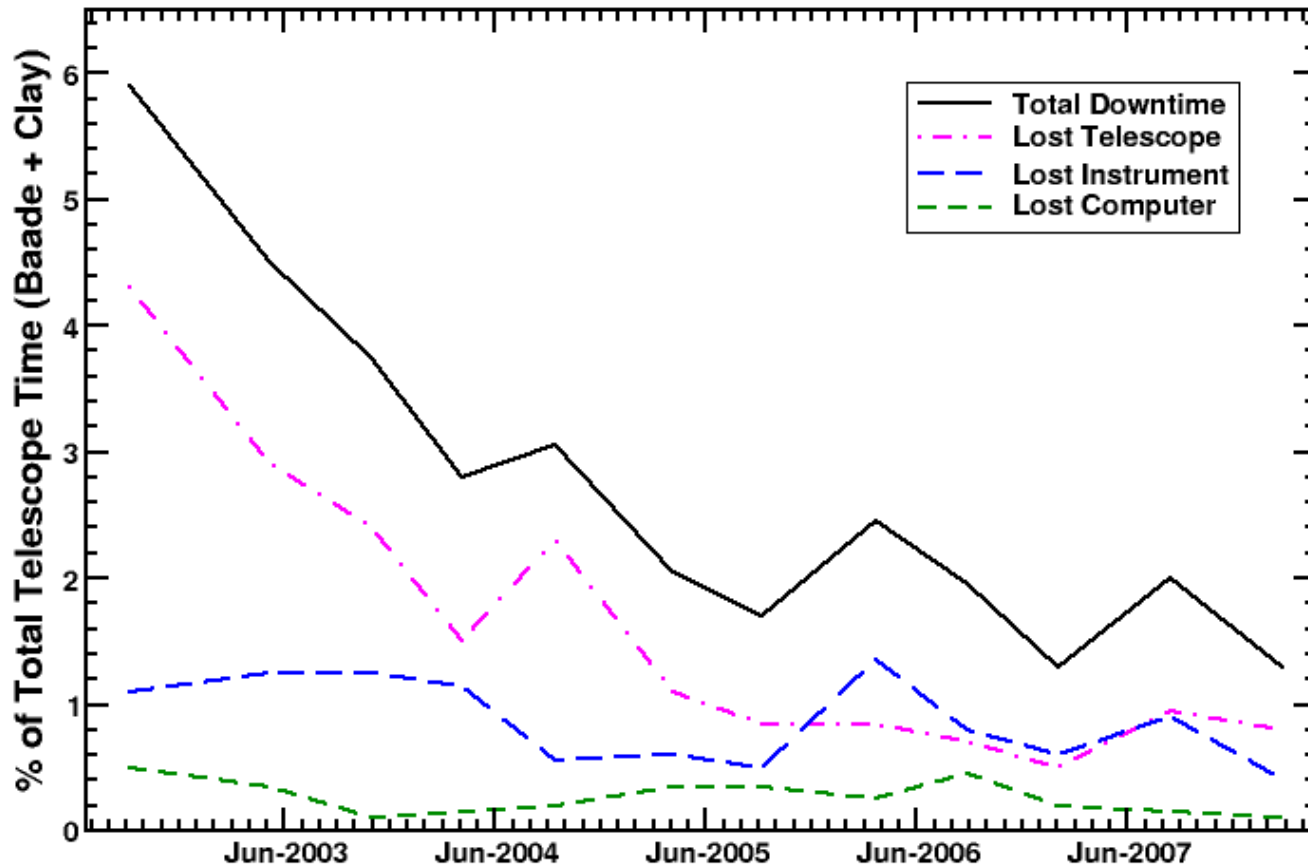
| | Baade | Clay |
|-------------------------|-------------|-------------|
| % Open | 87.2% | 88.4% |
| % Lost to Weather | 11.1% | 10.8% |
| % Lost to Telescope | 0.9% | 0.7% |
| % Lost to Instrument | 0.7% | 0.1% |
| % Lost to Computer | 0.1% | 0.1% |
| % Total Downtime | 1.7% | 0.9% |

Observing Statistics

Instrument Downtime:

| | 9 Feb 2007- 21 Aug 2007 | 22 Aug 2007- 8 Mar 2008 |
|-------------|----------------------------|----------------------------|
| MIKE | 0.0% | 0.0% |
| MIKE fibers | 2.8% | 0.0% |
| MagIC | 0.0% | 0.0% |
| LDSS-3 | 0.5% | 0.2% |
| IMACS | 0.4% | 1.0% |
| PANIC | 1.6% | 0.2% |
| MagE | -- | 0.0% |

Observing Statistics: Downtime



Commissioning of Instruments

- **IMACS** -- commissioned
- **MIKE** -- commissioned
- **PANIC** -- uncommissioned (and never will be)
- **MagIC** -- almost commissioned?
 - MagIC and its new cable wrap were mounted on the FP2 port of Baade in early-Nov
 - Engineering carried out in Nov 2007 and Jan-Feb 2008
 - SITe CCD is functioning and is available for science usage
 - EEV CCD is operable but currently suffers from strong pattern noise; further engineering is scheduled
 - To complete commissioning requirements for SITe mode:
 - Mount vacuum pump on telescope (MIT)
 - Software upgrades and on-sky tests of EEV CCD (MIT)
 - Complete Users Manual and Mountain Support Manual (MIT)
 - Finish Support Agreement (MIT, Magellan Ops)

Commissioning of Instruments

- **MagE** -- almost commissioned
 - MagE was installed at FP2 of Clay telescope Nov 2007
 - Two successful engineering runs in Nov 2007 and Jan 2008
 - Instrument now being used routinely for science observations
 - A Support Agreement has been drafted by the instrument team, and reviewed by the Magellan Operations staff
 - Commissioning report to be delivered at this meeting

Commissioning of Instruments (cont.)

- **LDSS3** -- an uncommissioned Magellan instrument
 - No further progress in completing commissioning process
 - Ian Thompson continues to support detector system; Christoph Birk continues to maintain the instrument control software
 - Alan Uomoto headed up effort to improve shutter reliability, and to allow all three VPH gratings to be in the instrument at the same time
 - A scientist is needed to serve as the Instrument P.I.
 - An institution is needed to take over maintenance of the mechanical systems
 - A support agreement is needed
 - **I've been saying all of this for over a year now!**

Agreement with Durham ends early next year...